

- 30 Eisenberg, D. *et al.* (2000) Protein function in the post-genomic era. *Nature* 405, 823–826
- 31 Hughes, T.R. *et al.* (2000) Functional discovery via a compendium of expression profiles. *Cell* 102, 109–126
- 32 Mayer, M.L. and Hieter, P. (2000) Protein networks – built by association. *Nat. Biotechnol.* 18, 1242–1243
- 33 Schwikowski, B. *et al.* (2000) A network of protein–protein interactions in yeast. *Nat. Biotechnol.* 18, 1257–1261
- 34 Young, R.A. (2000) Biomedical discovery with DNA arrays. *Cell* 102, 9–15
- 35 Diehn, M. *et al.* (2000) Large-scale identification of secreted and membrane-associated gene products using DNA microarrays. *Nat. Genet.* 25, 58–62
- 36 Cagney, G. *et al.* (2000) High-throughput screening for protein–protein interactions using two-hybrid assay. *Methods Enzymol.* 328, 3–14
- 37 Hiemstra, H.S. *et al.* (2000) Antigen arrays in T cell immunology. *Curr. Opin. Immunol.* 12, 80–84
- 38 Emili, A.Q. and Cagney, G. (2000) Large-scale functional analysis using peptide or protein arrays. *Nat. Biotechnol.* 18, 393–397
- 39 Bieri, C. *et al.* (1999) Micropatterned immobilization of a G protein-coupled receptor and direct detection of G protein activation. *Nat. Biotechnol.* 17, 1105–1108
- 40 Hufton, S.E. *et al.* (1999) Phage display of cDNA repertoires: the pVI display system and its applications for the selection of immunogenic ligands. *J. Immunol. Methods* 231, 39–51
- 41 Butteroni, C. *et al.* (2000) Phage display screening reveals an association between germline-specific transcription factor Oct-4 and multiple cellular proteins. *J. Mol. Biol.* 304, 529–540
- 42 Zozulya, S. *et al.* (1999) Mapping signal transduction pathways by phage display. *Nat. Biotechnol.* 17, 1193–1198
- 43 Sidhu, S.S. (2000) Phage display in pharmaceutical biotechnology. *Curr. Opin. Biotechnol.* 11, 610–616
- 44 Fields, S. and Song, O. (1989) A novel genetic system to detect protein–protein interactions. *Nature* 340, 245–246
- 45 Colledge, M. *et al.* (2000) Targeting of PKA to glutamate receptors through a MAGUK-AKAP complex. *Neuron* 27, 107–119
- 46 Hata, Y. *et al.* (1998) Synaptic PDZ domain-containing proteins. *Neurosci. Res.* 32, 1–7
- 47 Uetz, P. *et al.* (2000) A comprehensive analysis of protein–protein interactions in *Saccharomyces cerevisiae*. *Nature* 403, 623–627
- 48 Ito, T. *et al.* (2000) Toward a protein–protein interaction map of the budding yeast: a comprehensive system to examine two-hybrid interactions in all possible combinations between the yeast proteins. *Proc. Natl. Acad. Sci. U. S. A.* 97, 1143–1147
- 49 Vidal, M. and Endoh, H. (1999) Prospects for drug screening using the reverse two-hybrid system. *Trends Biotechnol.* 17, 374–381
- 50 Putz, U. *et al.* (1996) A tri-hybrid system for the analysis and detection of RNA–protein interactions. *Nucleic Acids Res.* 24, 4838–4840
- 51 Pandey, A. *et al.* (2000) Identification of a novel immunoreceptor tyrosine-based activation motif-containing molecule, STAM2, by mass spectrometry and its involvement in growth factor and cytokine receptor signaling pathways. *J. Biol. Chem.* 275, 38633–38639
- 52 Zambrowicz, B.P. *et al.* (1998) Disruption and sequence identification of 2,000 genes in mouse embryonic stem cells. *Nature* 392, 608–611
- 53 Sattler, R. *et al.* (1999) Specific coupling of NMDA receptor activation to nitric oxide neurotoxicity by PSD-95 protein. *Science* 284, 1845–1848
- 54 Sattler, R. and Tymianski, M. (2000) Molecular mechanisms of calcium-dependent excitotoxicity. *J. Mol. Med.* 78, 3–13
- 55 Takagi, N. *et al.* (2000) Altered interaction between PSD-95 and the NMDA receptor following transient global ischemia. *J. Neurochem.* 74, 169–178
- 56 Kallen, K. *et al.* (2000) New perspectives on the design of cytokines and growth factors. *Trends Biotechnol.* 18, 455–461

# Cortical spreading depression and migraine: new insights from imaging?

Michael F. James, Justin M. Smith, Simon J. Boniface, Christopher L-H. Huang and Ronald A. Leslie

The possibility that spreading depression (SD) of cortical activity, a phenomenon observed in all vertebrates, causes the aura of migraine remains an open question in spite of nearly half a century of investigation. SD is also thought to be associated with the progressive neuronal injury observed during cerebral ischaemia. Thus, the ability to detect and investigate SD in humans might prove clinically significant. Animal studies of cortical spreading depression (CSD) have benefited greatly from the advent of relatively non-invasive imaging techniques. The use of these new imaging techniques for clinical studies will accelerate progress in this area of neurobiology.

Migraine is a debilitating condition affecting 10–15% of the population<sup>1,2</sup>, and is characterized by episodic attacks of severe headache that are often unilateral, pulsating and aggravated by movement. It is

associated with nausea, vomiting, photophobia or phonophobia. Accordingly, migraine has a large economic cost<sup>3</sup>.

The cerebral cortex of migraineurs is thought to be abnormally responsive to repeated stimuli<sup>4</sup>, so that a wide variety of stimuli (flickering light<sup>5</sup>, noise, even the smell of strong perfume<sup>6</sup>) might act as triggers for an attack. Anecdotal evidence indicates that many migraineurs can predict the onset of their attacks. Premonitory symptoms (e.g. repetitive yawning,

**'Forty years ago the progression of visual symptoms during aura was noticed to have remarkable similarities with the spreading depression of cortical electroencephalographic (EEG) activity...'**

fatigue, stiff neck, photophobia) might precede a migraine attack by many hours. A possibly related phenomenon called migraine 'aura' occurs in about one-third of sufferers. Aura precedes the headache phase, and commonly includes visual disturbances, but other sensory, motor or speech disturbances can be involved. Aura has a slow, progressive onset and can be associated with movements of scintillations or fortification illusions, followed by a 'scotoma' or blind spot, across the visual field. In a classic reference,

### Box 1. Ionic and cellular components of cortical spreading depression

Cortical spreading depression (CSD) involves a temporary, but major, localized redistribution of ions between intracellular and extracellular compartments. This ion redistribution is energy dependent<sup>a</sup>, becoming clinically significant in ischaemia when brain metabolism is impaired. During CSD initiation the concentration of extracellular  $K^+$ ,  $[K^+]_o$ , rapidly rises, causing brief neuronal excitation then depolarization and a period of electrical silence during which the direct current (DC) potential at the brain surface falls. In tandem,  $[Na^+]_o$  and  $[Cl^-]_o$  levels decrease as these ions enter cells. Consequently, water enters cells, the extracellular space is reduced, and cells swell<sup>b</sup>.  $Ca^{2+}$  ions also move inwards, but slightly later than the outward movement of  $K^+$ , suggesting that  $Ca^{2+}$  movements follow  $K^+$  fluxes. Additional negative ion species move outwards to maintain electrical balance, the excitatory neurotransmitter glutamate probably being the most important<sup>c</sup>.

In the isolated chick retina<sup>d</sup>, human neocortical tissue<sup>e</sup> and cat brain<sup>f</sup>, NMDA receptor antagonists block SD completely. By contrast, in rat hippocampus, glutamate (and  $Ca^{2+}$ ) facilitates SD initiation, whereas NMDA antagonists (and low  $[Ca^{2+}]_o$ ) delay its onset but fail to block SD completely<sup>g-h</sup>.

Both volume-activated ion channels<sup>i-k</sup> and glial cells probably play important roles in the restoration of normal cellular homeostasis. The former are stimulated during cell swelling, and the latter provide spatial buffering that prevents increased levels of  $[K^+]_o$  and  $[Glu^-]_o$  during normal neuronal activity. However, they might also prolong CSD: volume-activated ion channels release glutamate during CSD (Ref. l); and although gliotoxins prolong CSD (Ref. m), they also reduce glutamate efflux from glial cells<sup>n</sup>. CSD and PID appear more difficult to evoke in brains of larger animals in which the ratio of glia to neurones tends to be higher, suggesting that glial cells are important for limiting CSD activity<sup>o</sup>. Such limiting forces might be greater in the more complexly folded human brain, and could explain the paucity of literature accounts of CSD during neurosurgery.

Cooperation between glia and neurones maintains normal ion and transmitter levels during neuronal activity. During CSD the magnitude of the ion movements and the synchrony of these fluxes might be abnormal. A possible mechanism for such a greatly enhanced, but transient, synchrony might

involve changes in the permeability of gap junctions<sup>p,q</sup>, because the gap junction blockers octanol and halothane prevent CSD propagation, especially in gyrencephalic species<sup>r,q,r</sup>.

#### References

- a Bures, J. *et al.* (1984) The meaning and significance of Leao's spreading depression. *An. Acad. Brasil Cienc.* 56, 385–400
- b Nicholson, C. and Kraig, R.P. (1981) *The Application of Ion-Selective Microelectrodes* (Zeuthen, T., ed.), pp. 217–238, Elsevier/North Holland Biomedical Press
- c Szerb, J.C. (1991) Glutamate release and spreading depression in the fascia dentata in response to microdialysis with high  $K^+$ : role of glia. *Brain Res.* 542, 259–265
- d Sheardown, M.J. (1993) The triggering of spreading depression in the chick retina: a pharmacological study. *Brain Res.* 607, 189–194
- e Avoli, M. *et al.* (1991) Epileptiform activity induced by low extracellular magnesium in the human cortex maintained *in vitro*. *Ann. Neurol.* 30, 589–596
- f Kaube, H. and Goadsby, P.J. (1994) Anti-migraine compounds fail to modulate the propagation of cortical spreading depression in the cat. *Eur. Neurol.* 34, 30–35
- g Somjen, G.G. *et al.* (1992) Mechanisms of spreading depression: a review of recent findings and a hypothesis. *Can. J. Physiol. Pharmacol.* 70, S248–S254
- h Obrenovitch, T.P. *et al.* (1996) Evidence against high extracellular glutamate promoting the elicitation of spreading depression by potassium. *J. Cereb. Blood Flow Metab.* 16, 923–931
- i Basarsky, T.A. *et al.* (1998) Imaging spreading depression and associated intracellular calcium waves in brain slices. *J. Neurosci.* 18, 7189–7199
- j Nilius, B. *et al.* (1996) Volume-activated  $Cl^-$  channels. *Gen. Pharmacol.* 27, 1131–1140
- k Maingret, F. *et al.* (1999) TRAAK is a mammalian neuronal mechano-gated  $K^+$  channel. *J. Biol. Chem.* 274, 1381–1387
- l Basarsky, T.A. *et al.* (1999) Glutamate release through volume-activated channels during spreading depression. *J. Neurosci.* 19, 6439–6445
- m Gardner-Medwin, A.R. (1981) Possible roles of vertebrate neuroglia in potassium dynamics, spreading depression and migraine. *J. Exp. Biol.* 95, 111–127
- n Largo, C. *et al.* (1997) Effects of the gliotoxin fluorocitrate on spreading depression and glial membrane potential in rat brain *in situ*. *J. Neurophysiol.* 78, 295–307
- o Strong, A.J. *et al.* (2000) Factors influencing the frequency of fluorescence transients as markers of peri-infarct depolarizations in focal cerebral ischemia. *Stroke* 31, 214–222
- p Nedergaard, M. *et al.* (1995) Gap junctions are required for the propagation of spreading depression. *J. Neurobiol.* 28, 433–444
- q Largo, C. *et al.* (1997) Heptanol but not fluoroacetate prevents the propagation of spreading depression in rat hippocampal slices. *J. Neurophysiol.* 77, 9–16
- r Piper, R.D. and Lambert, G.A. (1996) Inhalational anesthetics inhibit spreading depression: relevance to migraine. *Cephalalgia* 16, 87–92

Lashley<sup>7</sup> mapped the progression of his own visual aura, calculating that cortical function was affected at a rate of  $\sim 3 \text{ mm} \cdot \text{min}^{-1}$ .

Forty years ago the progression of visual symptoms during aura was noticed<sup>8</sup> to have remarkable similarities with the spreading depression of cortical electroencephalographic (EEG)

activity described by Leão<sup>9</sup>. Although CSD is relatively easy to observe in animal brains, technical challenges probably account for the dearth of human CSD studies<sup>10</sup>. Nevertheless, some reports do indicate the occurrence of CSD in humans<sup>11,12</sup>.

Here we consider the evidence linking CSD with migraine and its aura, and show how modern *in vivo*

Michael F. James  
 Ronald A. Leslie\*  
 Neuroscience Research,  
 GlaxoSmithKline, New  
 Frontiers Science Park  
 (North), Third Avenue,  
 Harlow, Essex, UK  
 CM19 5AW.  
 \*e-mail: ron\_leslie-1@  
 gsk.com

Justin M. Smith  
 MRC Biochemical &  
 Clinical Magnetic  
 Resonance Unit, John  
 Radcliffe Hospital, Oxford,  
 UK OX1 3QU.

Simon J. Boniface  
 Dept of Clinical  
 Neurophysiology and  
 Wolfson Brain Imaging  
 Centre, Addenbrooke's  
 Hospital, Cambridge, UK  
 CB2 2QQ.

Christopher L-H. Huang  
 Physiological Laboratory,  
 University of Cambridge,  
 Downing Street,  
 Cambridge, UK CB2 3EG.

### Box 2. Cortical spreading depression, electrophysiology and migraine

Cortical spreading depression (CSD) in animal models (mainly rabbit and rat) affects single neurone spike activity, synchronization of synaptic potentials and steady membrane potentials produced by neurones or glia. Together these are recorded as a flattening of the EEG and a reduction in the cortical direct current (DC) potential. Although depression of the EEG is rarely complete, CSD changes its amplitude, shape and frequency when recorded from the exposed pia-arachnoid surface, with frequency changes sometimes occurring in advance of the main changes. Reduction or abolition of somatosensory evoked potentials also occurs.

The characteristic surface-negative, DC slow-potential change of CSD advances via all cortical layers, arriving earliest via the most superficial ones in which ion movements are greatest. Single neurones discharge briefly at the onset of the EEG depression and are then suppressed, followed by a slow recovery of spontaneous activity. Average cell membrane potentials are reduced during the negative phase of CSD, during which the passive electrical properties of depressed neural tissue are reflected by changes in overall resistive and capacitive components of cortical impedance. Currents that are tangential to the skull arising from CSD alter the magnetic fields external to the head. Such changes are detected by magnetoencephalography (MEG), but poor spatial resolution requires the locations of the current sources to be interpreted using computer modelling.

Most migraine studies have been largely interictal, with changes noted in evoked potentials and on transcranial magnetic stimulation (TMS) (Refs a,b). These changes are thought to reflect an abnormal excitability of cortical neurones. This altered

excitability might enhance interictal visual acuity in migraineurs<sup>c</sup>, but perhaps leads to a situation in which cortical activity is insufficiently damped and therefore CSD can 'break through' when the level of afferent input to the brain breaches some threshold.

TMS studies, comparing migraineurs with and without aura and controls, showed that cortical responsiveness is altered in at least two respects<sup>d</sup>. (1) TMS of the occipital cortex produces brief scintillations (phosphenes) in the visual field: in migraineurs with aura a lower phosphene threshold was detected compared with other subjects. (2) TMS of the motor cortex evokes a muscle contraction response: in migraineurs, an increase in the excitability threshold for muscle contraction has been reported. Such studies, however, produce mixed results from different protocols and study groups. Nevertheless these results imply that ictal studies of migraine should be investigated by a combination of MRI and simultaneous region-specific TMS, or by TMS assessments before and after ictal MEG. Acquisition of EEG or MEG during MRI is also likely to be fruitful. These approaches would also be compatible with an acute experimental pharmacotherapeutic intervention.

#### References

- a Hallett, M. (2000) Transcranial magnetic stimulation and the human brain. *Nature* 406, 147–150
- b Mulleners, W.M. *et al.* (2001) Suppression of perception in migraine: evidence for reduced inhibition in the visual cortex. *Neurology* 56, 178–183
- c Palmer, J.E. *et al.* (2000) Cortical hyperexcitability is cortical under-inhibition: evidence from a functional test of migraine patients. *Cephalalgia* 20, 525–532
- d Aurora, S.K. and Welch, K.M.A. (1998) Brain excitability in migraine: evidence from transcranial magnetic stimulation studies. *Curr. Opin. Neurol.* 11, 205–209

imaging will probably advance this field of neurobiology.

#### Cortical spreading depression

CSD probably starts with a cellular efflux of K<sup>+</sup>, leading to depolarization and a period of relative electrical silence (Box 1). The subsequent energy-dependent restitution of ion gradients eventually restores normal neuronal activity. The ionic activity, however, results in a wave of neuronal depolarization propagating away from the initiation site at a velocity of ~3 mm.min<sup>-1</sup>. Because the depolarization–restoration process takes ~1.5 min, the wave is only ~5 mm deep.

A phenomenon similar to CSD, peri-infarct depolarization<sup>13</sup> (PID), has been described in models of cerebral ischaemia<sup>14</sup>, subarachnoid haemorrhage<sup>15</sup> and cortical trauma<sup>16</sup>, and has also been observed in humans<sup>17</sup>. PID has been implicated in the progressive development of brain injury following ischaemia<sup>18</sup>. It

is possible, therefore, that an inhibitor of CSD and/or PID could be valuable in treating migraine and neuronal injury in stroke or brain trauma.

#### CSD, migraine and the cerebrovasculature

Leão observed that CSD also leads to transient dilatation of pial arteries, increasing venous flow and 'arterialization' of the blood<sup>19</sup>. Following this CSD-associated transient hyperperfusion, cortical hypoperfusion ensues that persists long after CSD waves have passed<sup>20–24</sup>. The hypoperfused area might reflect the cortical surface traversed by CSD events, as opposed to the small region involved in individual CSD wavefronts.

The discovery of prolonged hypoperfusion during migraine strengthened its hypothetical link with CSD (for reviews see Refs 10,25,26). Imaging studies of patients experiencing migraine with aura describe the development of unilateral regions of occipital hypoperfusion that tend to spread rostrally from the

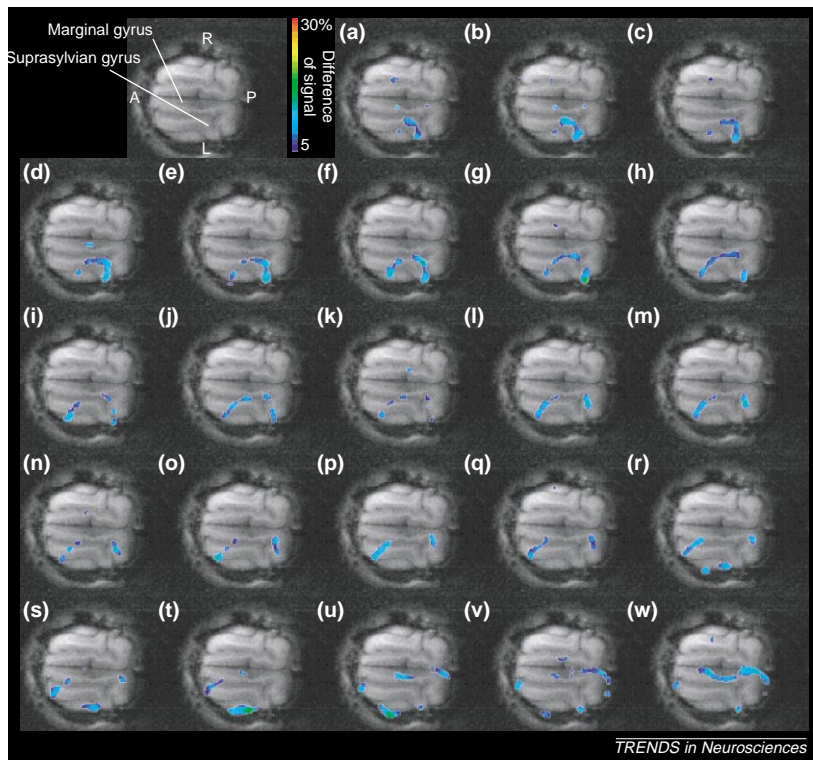


Fig. 1. Cortical spreading depression (CSD) propagating across the surface of the cat brain *in vivo*. Images were obtained at 10 s intervals starting  $\sim$ 50 s after KCl application; the coloured overlays represent decreased cerebral water diffusion caused by water movement into cells during the passage of the CSD; overlays are superimposed on an anatomical image of the brain surface. In frames (a–k), the elliptical wave front travels both anteriorly and posteriorly along the suprasylvian gyrus from its centre, where the event was initiated. In frame (n), the wave begins to pass into the marginal gyrus posteriorly. The wave also moves laterally from the suprasylvian gyrus across the ectosylvian and suprasylvian sulci, out of the image plane, to reappear on the ectosylvian gyrus (frames r–v), and then on the marginal gyrus (frames t–w). Abbreviations: A, anterior; P, posterior; L, left; R, right. The event propagated with velocity  $3.2 \pm 0.1$  mm.min $^{-1}$ ; the field of view is 5 cm. Modified, with permission, from Ref. 34.

subcortical regions). This idea could explain some of the spreading physical symptoms that occur in some migraineurs. These perfusion changes spread at a rate that is consistent with the propagation of CSD (Refs 25,27,28).

#### CSD, migraine and EEG changes

In animals CSD 'flattens' the EEG response and decreases the direct current (DC) potential on the brain surface<sup>29</sup>. This suggests that EEG and similar non-invasive electrophysiological techniques, such as magnetoencephalography (MEG), might be valuable for investigating CSD in humans<sup>4</sup> (Box 2). The rapidly fluctuating voltages of EEG waveforms do not lend themselves to the detection of CSD because of the high-pass filtering normally used to process EEG signals. Changes in DC potential have been difficult to detect during neurosurgery, but have been shown

occipital cortex and to persist into the headache phase. However, spreading cerebral perfusion changes have also been reported in migraine without aura, perhaps because SD occurs in brain regions subserving functions other than vision (including

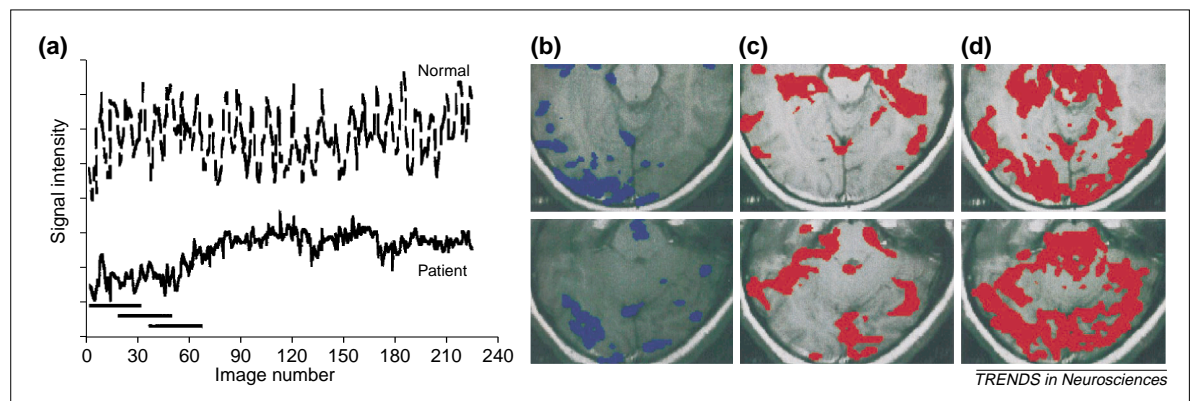


Fig. 2. Blood oxygen level-dependent (BOLD)-fMRI of the occipital cortex during a migraine attack. A migraine attack was provoked using an alternating red–green checkerboard pattern projected to the patient in the magnet. The pattern alternated at 9 Hz and was on or off every 14 s. The patient experienced visual symptoms that appeared at the onset of a severe headache 6.1 min after the start of the visual stimulus ( $\sim$ image 104). The visual changes reported were different to the patient's usual aura. (a) (Upper trace): in normal subjects, no migraine attack was provoked and the visual cortex responded to the on-off visual stimulus with corresponding changes in BOLD signal for 12.4 min (224 images). (Lower trace): in the patient, cortical responsiveness was inhibited during the migraine attack and the BOLD signal intensity was also increased from baseline (horizontal bars = 1.75 min each). (b)–(d) The spatial extent of baseline BOLD signal changes in the patient. Two adjacent axial images (upper, lower) through the occipital cortex are shown; BOLD intensities were compared with the mean signal intensity of the first 56 images and significant changes were superimposed on these anatomical images. The field of view is 24 cm. (b) In the right occipital lobe (i.e. left of image), during images 83–112, significantly

decreased (blue) BOLD signal changes occurred before symptom onset; these changes were observed only in patients who reported visual symptoms. (c) Significant increases in BOLD signal (red) that coincided with the suppression of cortical responsiveness were also observed during this time period, especially in the left visual cortex (i.e. right of the image) but also in the association cortex. (d) During symptoms (images 113–168), increased BOLD signal had spread by 9.8 min (image 168) into the left hemisphere (i.e. right of the image). The authors suggest that the BOLD intensity increase that coincided with the suppression of visual activation might reflect vasodilation similar to that observed during the earliest phase of cortical spreading depression (CSD). They also indicate that the waves of suppression were of variable duration, and were more widespread anatomically than might be expected from the localized nature of the signal intensity increase of experimental spreading depression, or of the spreading suppression of visual activation or neurologic symptoms of their patients. Modified, with permission, from Ref. 28. See also Ref. 38 which amplifies these findings and provides further strong evidence that CSD underlies migraine aura.

with intracranial electrocorticography<sup>17</sup> after human head injury. Focal DC potential shifts propagating across the cortex should give rise to changes in the magnetic field outside the head. Thus, MEG has been used in animals to detect CSD (Refs 30,31). Furthermore, DC potential shifts have been detected with MEG during migraine aura and headache<sup>32</sup>. Nevertheless, reliable detection of small signal changes, perhaps as a result of CSD, during migraine remains a difficult task. These techniques will probably be combined with other non-invasive techniques, such as transcranial magnetic stimulation and *in vivo* imaging.

#### CSD, migraine and imaging

Both CSD and PID have been imaged in animal brains using MRI. Transient, localized changes in cerebral water diffusibility, arising from altered tissue water compartmentalization (Box 1), can be detected during CSD with diffusion-weighted MRI. Both CSD and PID, in normal and ischaemic brain, respectively, have been detected in animals in this way<sup>15,33–35</sup> (Fig. 1). CSD has also been detected with MRI techniques that are sensitive to transient hyperaemic changes<sup>36,37</sup>. There are, however, some technical impediments to imaging CSD in humans.

- Migraine attacks usually occur unpredictably, often without prior warning, and volunteers are rarely available for imaging at the start of an attack.
- In animals, CSD wavefronts occupy very small brain areas (Fig. 1); if this is also true in humans, such small regions might not be easily detectable.
- Cortical folding could limit the spread of CSD in the human brain<sup>31,35</sup>, further increasing the difficulty of detection.
- The clinical timing of CSD or PID events is uncertain, so that continuous imaging would be necessary to maximize their detection.

Repetitive imaging in migraineurs has used functional MRI (fMRI) to detect blood-oxygenation level-dependent (BOLD) activations during aura indicative of the transient, propagating cerebral hyperperfusion of CSD. Because aura often involves visual disturbances, investigations have concentrated on the occipital cortex. Recently<sup>28,38</sup> subjects were imaged soon after the onset of a migraine attack, and the responsiveness of their occipital cortices was monitored while they observed a reversing checkerboard pattern. Transient increases in the baseline BOLD signal coincident with visual aura were detected, whereas the BOLD response to the on-off visual stimulus was suppressed (see Fig. 2). By comparing signals from different regions, it was shown that the period of suppression travelled across the occipital cortex<sup>28,38</sup>. A case of spontaneous migraine with aura, involving no visual stimuli, showed a rather widespread BOLD activation that propagated faster than expected for CSD (Ref. 39). A similar study<sup>27</sup>, using H<sub>2</sub><sup>15</sup>O-positron emission tomography, recorded a spreading hypoperfusion in a spontaneous migraine attack. Perhaps hypoperfusion can rapidly follow a transient BOLD activation: further studies with careful temporal resolution should clarify this point.

#### Conclusions and future studies

Evidence is accumulating that CSD and PID might be associated with migraine and other neurological disorders. New imaging techniques will provide a greater understanding of these phenomena and could lead to new methods of treatment. Although repetitive BOLD fMRI already represents a step forward in migraine and CSD research, future studies using repetitive diffusion-weighted and other types of MRI, in combination with other non-invasive techniques such as EEG and MEG, will lead to new insights into these important medical problems.

#### Acknowledgements

We thank D.P. Bradley, D.J. Clark, L.D. Hall, A. Macrae, C. Netsiri, A.A. Parsons, S.J. Read, A. Shepherd, M.I. Smith, S. Steel, P. Thorne, N. Upton and A.J. Wilkins for informative discussions.

#### References

- Ferrari, M.D. (1998) Migraine. *Lancet* 351, 1043–1051
- Schoenen, J. and Sándor, P. (1999) *Textbook of Pain* (Wall, P.D. and Melzack, R., eds), pp. 761–798, Churchill Livingstone
- Stewart, W.F. *et al.* (1994) Migraine heterogeneity. Disability, pain intensity, and attack frequency and duration. *Neurology* 44 (Suppl. 4), S24–S39
- Schoenen, J. (1998) Cortical electrophysiology in migraine and possible pathogenetic implications. *Clin. Neurosci.* 5, 10–17
- Marcus, D.A. and Soso, M.J. (1989) Migraine and stripe-induced visual discomfort. *Arch. Neurol.* 46, 1129–1132
- Lance, J.W. (1993) Current concepts of migraine pathogenesis. *Neurology* 43, S11–S15
- Lashley, K.S. (1941) Patterns of cerebral integration indicated by the scotomas of migraine. *Arch. Neurol. Psychiatry* 46, 331–339
- Milner, P.M. (1958) Note on a possible correspondence between the scotomas of migraine and spreading depression of Leao. *EEG Clin. Neurophysiol.* 10, 705
- Leão, A.A.P. (1944) Spreading depression of activity in the cerebral cortex. *J. Neurophysiol.* 7, 359–390
- Cutrer, F.M. *et al.* (2000) Functional neuroimaging: enhanced understanding of migraine pathophysiology. *Neurology* 55 (Suppl. 2), S36–S45
- Sramka, M. *et al.* (1977) Functional ablation by spreading depression: possible use in human stereotaxic neurosurgery. *Appl. Neurophysiol.* 40, 48–61
- Avoli, M. *et al.* (1991) Epileptiform activity induced by low extracellular magnesium in the human cortex maintained *in vitro*. *Ann. Neurol.* 30, 589–596
- Aitken, P.G. *et al.* (1998) Similar propagation of SD and hypoxic SD-like depolarization in rat hippocampus recorded optically and electrically. *J. Neurophysiol.* 80, 1514–1521
- Hossmann, K-A. (1996) Perinfarct depolarizations. *Cerebrovasc. Brain Metab. Rev.* 8, 195–208
- Beaulieu, C. *et al.* (2000) Spreading waves of transient and prolonged decreases in water diffusion after subarachnoid hemorrhage in rats. *Magn. Reson. Med.* 44, 110–116
- Nilsson, P. *et al.* (1996) Continuous measurement of changes in regional cerebral blood flow following cortical compression contusion trauma in the rat. *J. Neurotrauma* 13, 201–207
- Mayevsky, A. *et al.* (1996) Cortical spreading depression recorded from the human brain using a multiparametric monitoring system. *Brain Res.* 740, 268–274
- Busch, E. *et al.* (1996) Potassium-induced cortical spreading depressions during focal cerebral ischemia in rats: contribution to lesion growth assessed by diffusion-weighted NMR and biochemical imaging. *J. Cereb. Blood Flow Metab.* 16, 1090–1099
- Leão, A.A.P. (1944) Pial circulation and spreading depression of activity in the cerebral cortex. *J. Neurophysiol.* 7, 391–396
- Lauritzen, M. (1984) Long-lasting reduction of cortical blood flow of the rat brain after spreading

- depression with preserved autoregulation and impaired CO<sub>2</sub> response. *J. Cereb. Blood Flow Metab.* 4, 546–554
- 21 Piper, R.D. *et al.* (1991) Cortical blood flow changes during spreading depression in cats. *Am. J. Physiol.* 261, H96–H102
- 22 Lacombe, P. *et al.* (1992) Spreading depression induces prolonged reduction of cortical blood flow reactivity in the rat. *Exp. Neurol.* 117, 278–286
- 23 Mraovitch, S. *et al.* (1992) Subcortical cerebral blood flow and metabolic changes elicited by cortical spreading depression in rat. *Cephalalgia* 12, 137–141
- 24 Kuge, Y. *et al.* (2000) Effects of single and repetitive spreading depression on cerebral blood flow and glucose metabolism in cats: a PET study. *J. Neurol. Sci.* 176, 114–123
- 25 Olesen, J. (1991) Cerebral and extracranial circulatory disturbances in migraine: pathophysiological implications. *Cerebrovasc. Brain Metab. Rev.* 3, 1–28
- 26 Lauritzen, M. (1994) Pathophysiology of the migraine aura. The spreading depression theory. *Brain* 117, 199–210
- 27 Woods, R.P. *et al.* (1994) Brief report: bilateral spreading cerebral hypoperfusion during spontaneous migraine headache. *New Engl. J. Med.* 331, 1689–1692
- 28 Cao, Y. *et al.* (1999) Functional MRI-BOLD of visually triggered headache in patients with migraine. *Arch. Neurol.* 56, 548–554
- 29 Marshall, W.H. (1959) Spreading cortical depression of Leão. *Physiol. Rev.* 39, 239–279
- 30 Bowyer, S.M. *et al.* (1999) Analysis of MEG signals of spreading cortical depression with propagation constrained to a rectangular cortical strip: I. Lissencephalic rabbit model. *Brain Res.* 843, 71–78
- 31 Bowyer, S.M. *et al.* (1999) Analysis of MEG signals of spreading cortical depression with propagation constrained to a rectangular cortical strip: II. Gyrencephalic swine model. *Brain Res.* 843, 79–86
- 32 Welch, K.M.A. *et al.* (1993) Central neurogenic mechanisms of migraine. *Neurology* 43 (Suppl 3), S21–S25
- 33 Hasegawa, Y. *et al.* (1995) Spreading waves of a reduced diffusion coefficient of water in normal and ischemic rat brain. *J. Cereb. Blood Flow Metab.* 15, 179–187
- 34 James, M.F. *et al.* (1999) Cortical spreading depression in the gyrencephalic feline brain studied by magnetic resonance imaging. *J. Physiol.* 519.2, 415–425
- 35 Bockhorst, K.H.J. *et al.* (2000) A quantitative analysis of cortical spreading depression events in the feline brain characterized with diffusion-weighted MRI. *J. Magn. Reson. Imaging* 12, 722–733
- 36 Gardner-Medwin, A.R. *et al.* (1994) Magnetic resonance imaging of propagating waves of spreading depression in the anaesthetized rat. *J. Cereb. Blood Flow Metab.* 14, 7–11
- 37 de Crespigny, A. *et al.* (1998) Magnetic resonance imaging assessment of cerebral hemodynamics during spreading depression in rats. *J. Cereb. Blood Flow Metab.* 18, 1008–1017
- 38 Hadjikhani, N. *et al.* Mechanisms of migraine aura revealed by fMRI in human visual cortex. *Proc. Natl. Acad. Sci. U. S. A.* (in press)
- 39 Welch, K.M.A. *et al.* (1998) MRI of the occipital cortex, red nucleus, and substantia nigra during visual aura of migraine. *Neurology* 51, 1465–1469

# The endoplasmic reticulum: one continuous or several separate Ca<sup>2+</sup> stores?

Ole Holger Petersen, Alexei Tepikin and Myoung Kyu Park

The Ca<sup>2+</sup> store and sink in the endoplasmic reticulum (ER) is important for Ca<sup>2+</sup> signal integration and for conveyance of information in spatial and temporal domains. Textbooks regard the ER as one continuous network, but biochemical and biophysical studies revealed apparently discrete ER Ca<sup>2+</sup> stores. Recent direct studies of ER luminal Ca<sup>2+</sup> movements show that this organelle system is one continuous Ca<sup>2+</sup> store, which can function as a Ca<sup>2+</sup> tunnel. The concept of a fully connected ER network is entirely compatible with evidence indicating that the distribution of Ca<sup>2+</sup>-release channels in the ER membrane is discontinuous with clustering in certain localities.

The ER is crucial for Ca<sup>2+</sup> signalling. The ER can act as a sink for Ca<sup>2+</sup> that enters the cell through channels in the plasma membrane, but can also be a source for Ca<sup>2+</sup> release into the cytosol in response to intracellular messengers, such as inositol 1,4,5-trisphosphate [Ins(1,4,5)P<sub>3</sub>] (Refs 1,2); cyclic ADP-ribose or nicotinic acid adenine dinucleotide phosphate<sup>3</sup>, generated following activation by

neurotransmitters. Because Ca<sup>2+</sup> can interact with many different molecular targets, signal specificity requires subcellular localization of the cytosolic Ca<sup>2+</sup> signal<sup>4,5</sup> and/or special oscillation and spiking patterns<sup>5,6</sup>. The ER is essential in this respect, because clustering and mixing of various Ca<sup>2+</sup>-release channel types in specific regions can focus Ca<sup>2+</sup> signals in space and time<sup>7–9</sup>. Failure of these processes can lead to serious pathological conditions<sup>6</sup>. Changes in ER Ca<sup>2+</sup> storage and release might also be important in neuronal ageing<sup>10</sup>.

Here we discuss whether the ER consists of one continuous vesiculo-tubular system or of separate isolated compartments. This issue is separate from, but relevant to, the discussion concerning ER heterogeneity. The question about the continuity and discontinuity of the ER lumen has consequences for cytosolic Ca<sup>2+</sup> signal generation and is related to the discussion about the quantal Ca<sup>2+</sup> release phenomenon: a sustained elevation of the cytosolic Ins(1,4,5)P<sub>3</sub> concentration to a submaximal level

**'More recently, the question of continuity or discontinuity has been directly addressed by monitoring movements of Ca<sup>2+</sup> within the ER lumen.'**

causes only a transient and partial liberation of Ca<sup>2+</sup> from the ER and further increments in the Ins(1,4,5)P<sub>3</sub> concentration elicit additional pulses of Ca<sup>2+</sup> release<sup>11–13</sup>. This could be explained by subdivision of the ER into separate compartments,